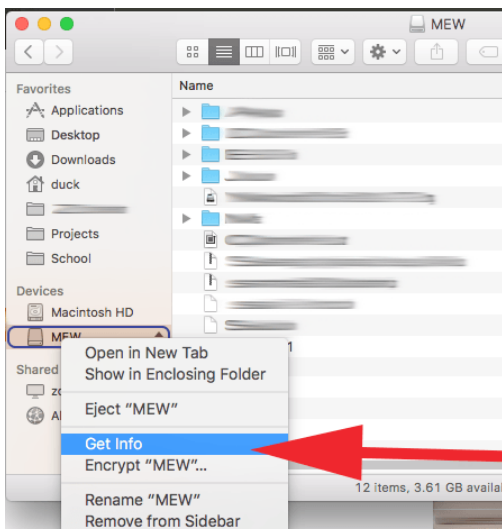


How to Format a Hard Drive (Mac)

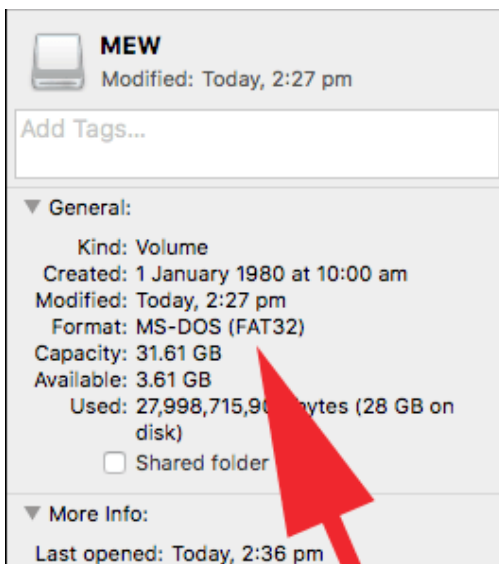
How to determine what format your drive is

1. Plug in your Hard Drive
2. Right click on the Drive in the sidebar in the Finder



3. Select Get Info

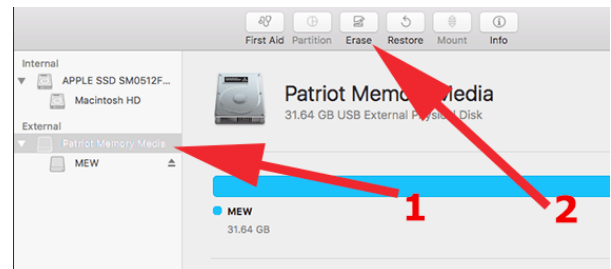
4. Look under "Format" as to what format your drive is. (In this example, it's FAT32 formatted)



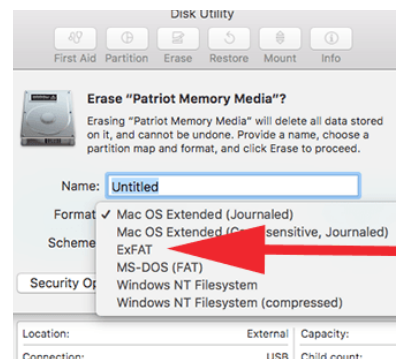
How to Format your Drive

WARNING: THIS WILL ERASE ALL DATA ON THE HARD DRIVE. COPY YOUR DATA OFF FIRST!

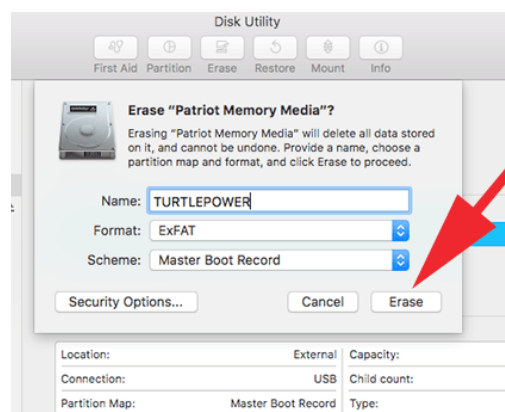
1. Plug in your Hard Drive
2. Open Disk Utility (it's in Applications/Utilities)
3. Select the Drive
4. Select Erase



5. Choose ExFAT from the drop down menu and give the hard drive a name.



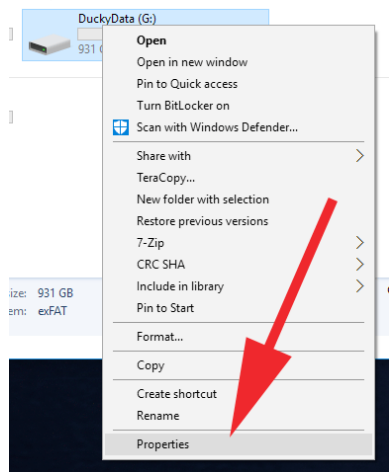
7. Click Erase



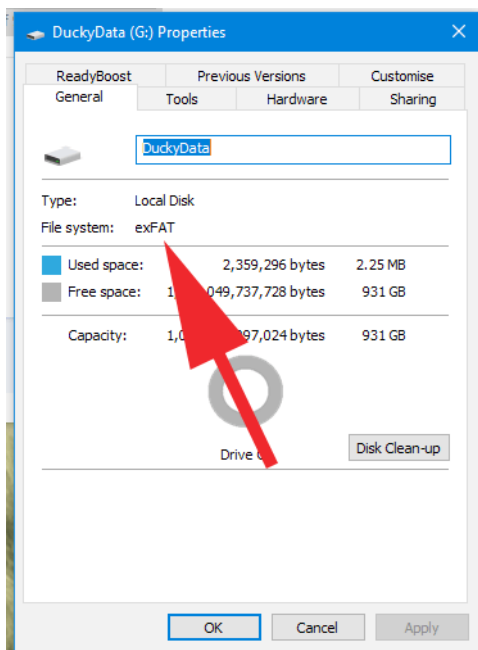
How to Format a Hard Drive (Windows)

How to determine what format your drive is currently

1. Plug in your Hard Drive
2. Right click on the Drive in My Computer
3. Go to Properties



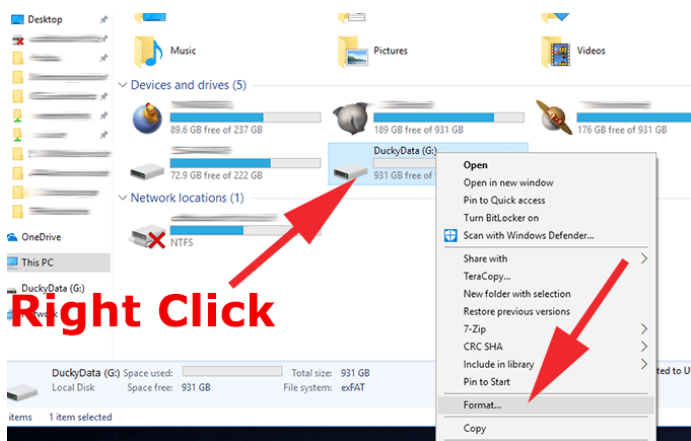
4. Look under “File System” to see what format your drive is



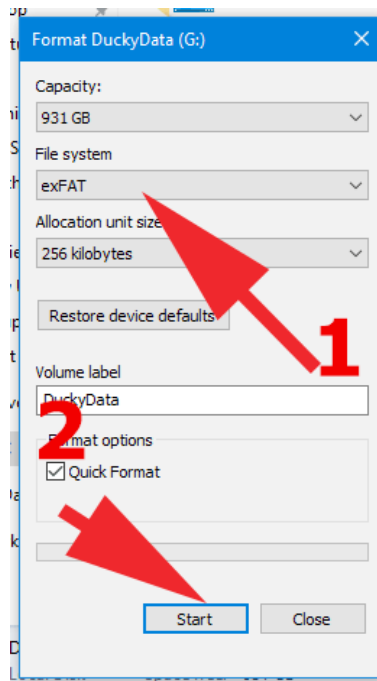
How to Format your Drive

WARNING: THIS WILL ERASE ALL DATA ON THE HARD DRIVE. COPY YOUR DATA OFF FIRST!

1. Plug in your Hard Drive
2. Open My Computer
3. Right click on the Hard Drive you just plugged in
4. Select Format



5. Select ExFAT under “File System” (ignore all the other options, the defaults are fine)



Like this article? Want more?

<http://blog.duklabs.com>